

Faculté de Médecine Paris Diderot

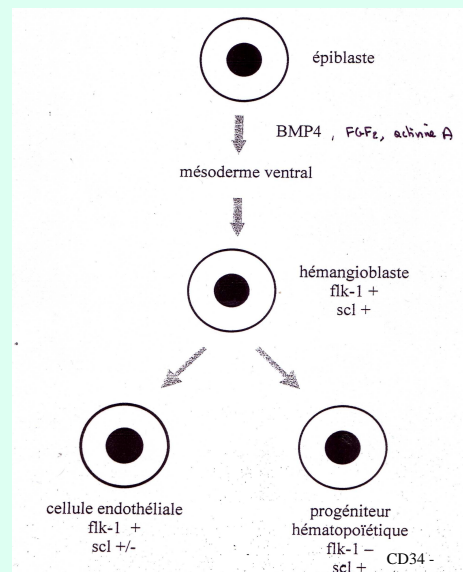
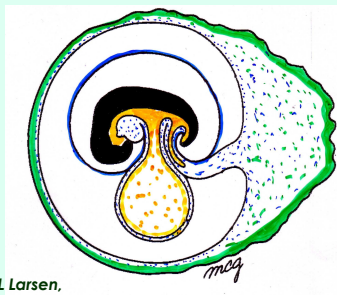
Hématopoïèse

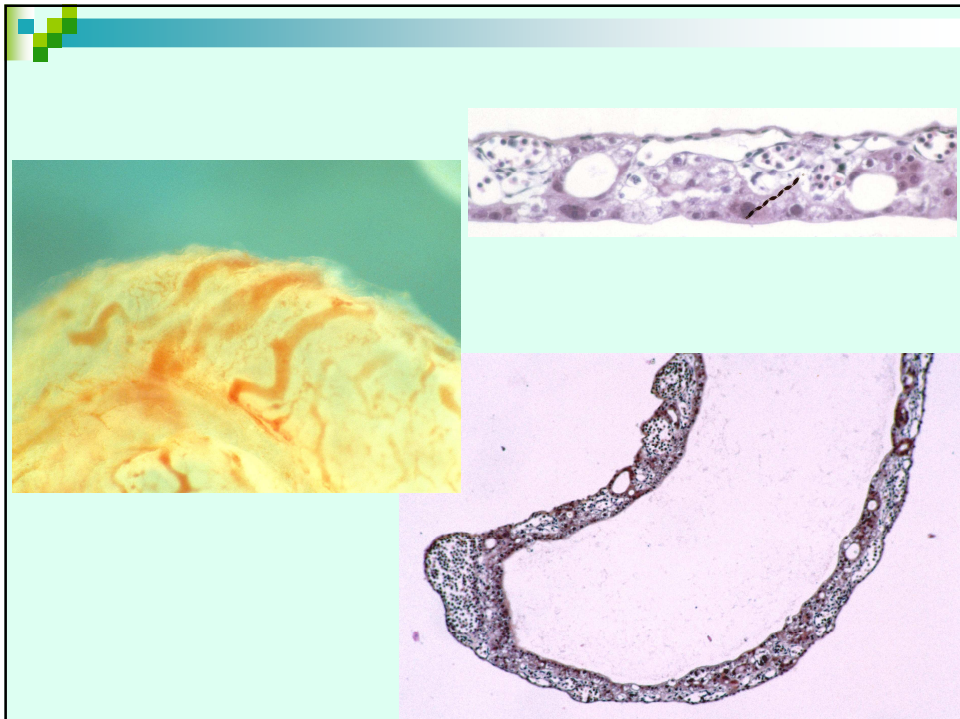
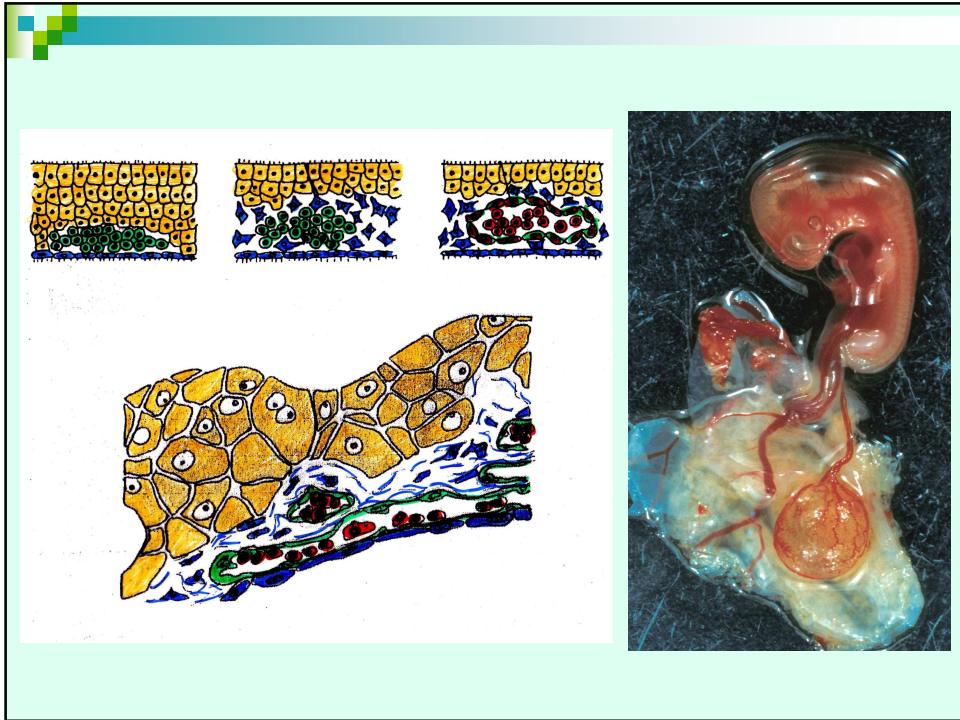
PCEM2

Module de Cardiologie

Organes hématopoïétiques primaires

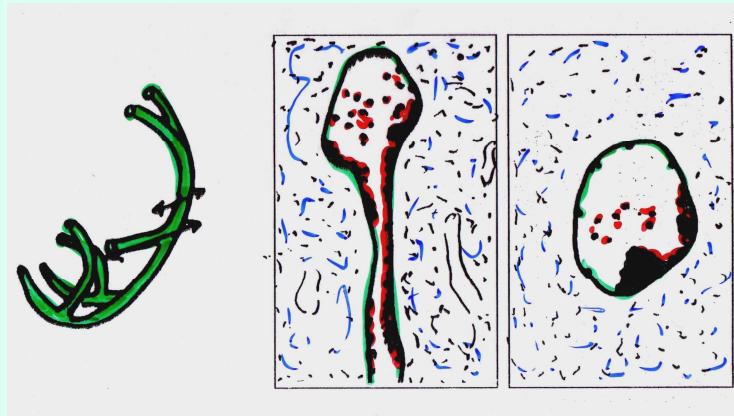
1- vésicule vitelline





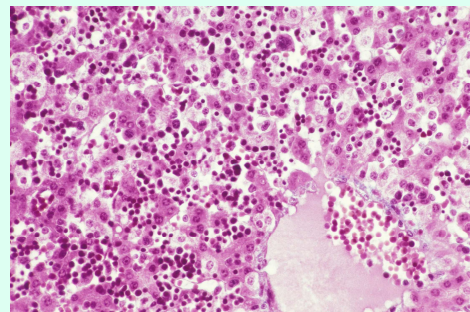
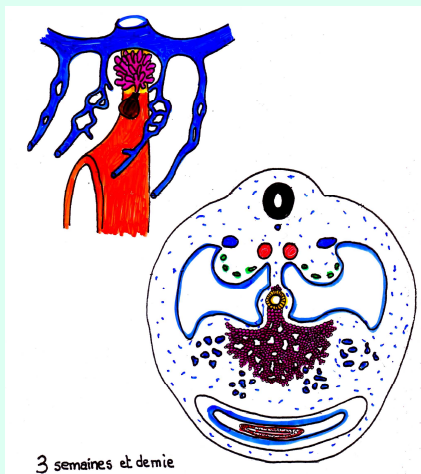
Organes hématopoïétiques primaires

1- plancher de l'aorte dorsale (J27 à J40)



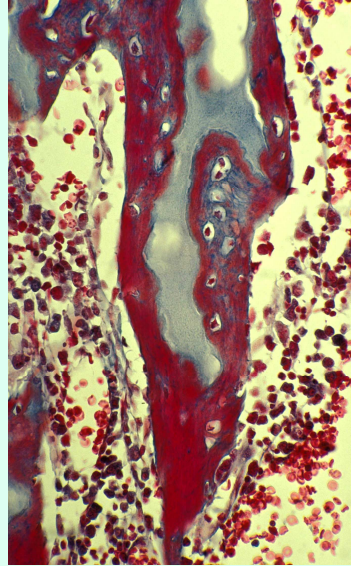
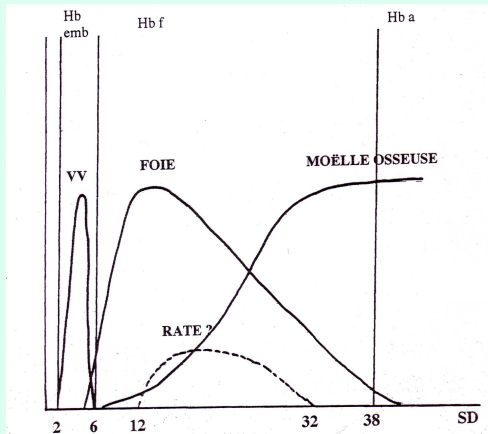
Organes hématopoïétiques secondaires

1- foie



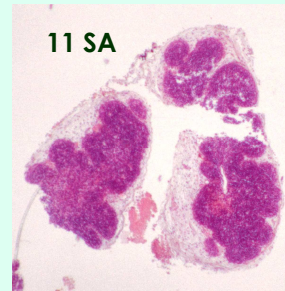
Organes hématopoïétiques secondaires

1- moëlle osseuse

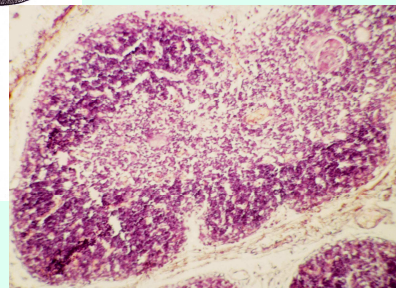


Organes lymphoïdes

1- thymus



22 SA



Organes lymphoïdes

2- rate

